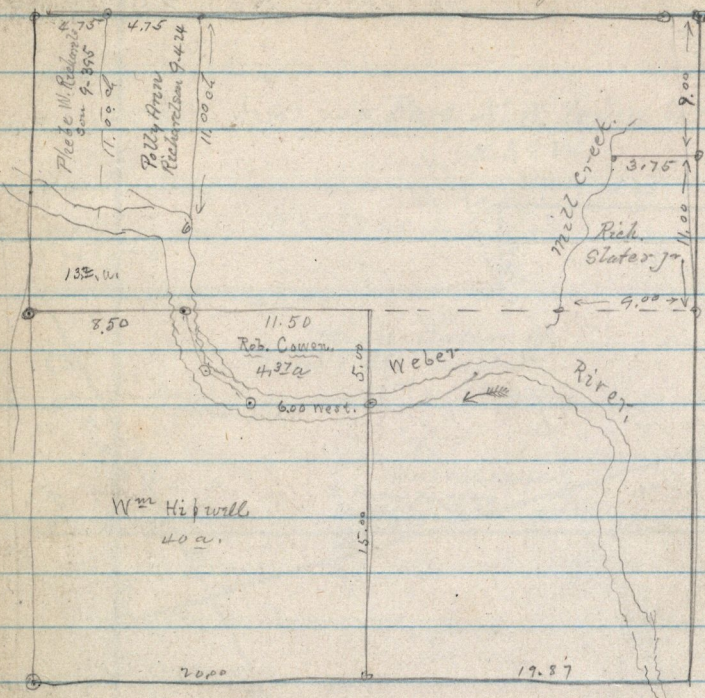


March 31-1897-

J. E. 1/4 Sec 9 T 6 N R 2 W.

Rob. Cowan Pat. 1/4 of N.E. 1/4 9. - 14-520-



N 85° 36' E  
 1/2 sec. 9  
 N 41° 30' E  
 1/2 sec. 9

4 = S.E. cor. SEC 19-  
 T 7 N R 1 E